

COMMERCIAL UNIT TO LET

Unit 2 Langham Stables, Lodsworth



Opportunity to rent a ground floor commercial Unit forming part of a small site of sensitively developed traditional Units located at Langham Stables, just outside of Lodsworth and with direct access from the A272. The surrounding Units are a hive of activity, let as Offices, Brewing and Light Manufacturing and all with direct outlook over nearby farmland.

Unit 2 measures approximately 40.1 square metres (439sq.ft). There is also an adjoining external store-room, offering an additional 14.8 square metres (159 sq. ft) of space available.

The Unit is suitable for Class E use, including office space, storage or light manufacture, and benefits from parking onsite. Electricity is single phase.

All enquiries and offers welcome.

£POA

Cowdray Estate Office, Cowdray Park, Midhurst, West Sussex, GU29 0AQ
T: 01730 763223
E: property@cowdray.co.uk



TO LET

Unit 2 Langham Stables, Lodsworth



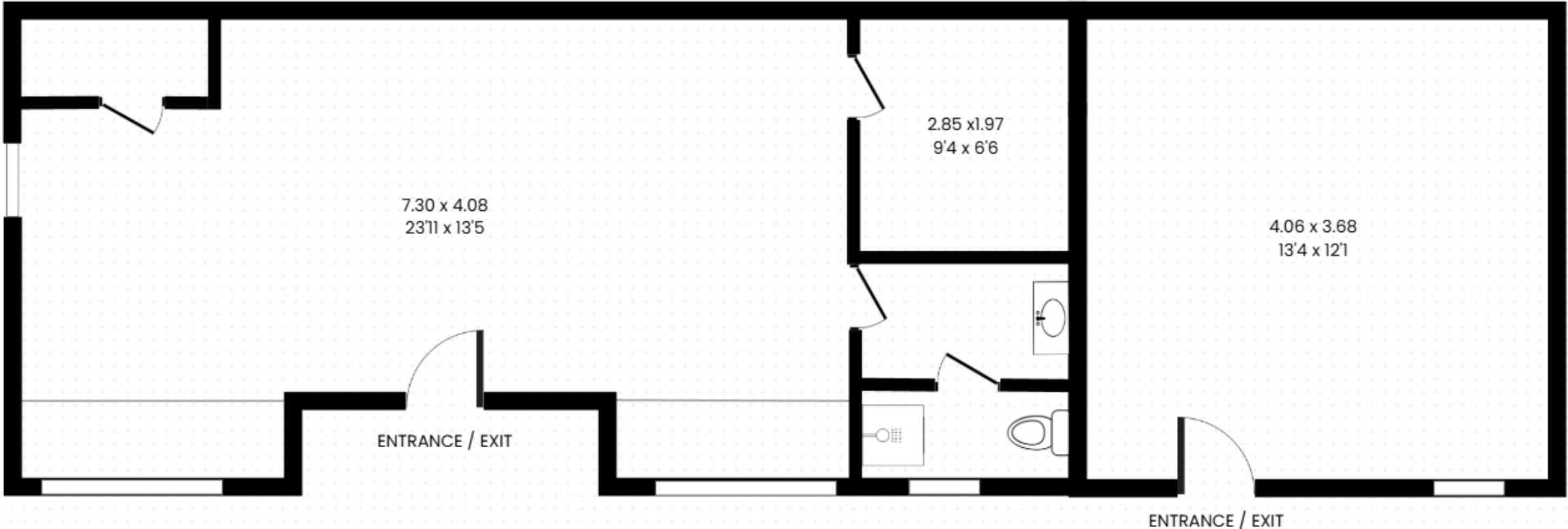
Cowdray Estate Office, Cowdray Park, Midhurst, West Sussex, GU29 0AQ
T: 01730 763223
E: property@cowdray.co.uk

TO LET

Unit 2 Langham Stables, Lodsworth

Approximate Gross Internal Area
56.8 sq m / 611 sq ft

This plan is for representation purposes only as defined by the RICS Code of Measuring Practice. Not drawn to scale unless stated. Please check all dimensions before making any decisions reliant upon them. No guarantee is given on square footage if quoted. Any figures if quoted should not be used as a basis for valuation.



Cowdray Estate Office, Cowdray Park, Midhurst, West Sussex, GU29 0AQ
T: 01730 763223
E: property@cowdray.co.uk

